



HAM TIN VILLAS
PUI O • SOUTH LANTAU



BRAND NEW BEACHFRONT HOUSES IN SOUTH LANTAU

NOW LEASING

Telephone: (852) 2844 8980 WhatsApp: (852) 2844 8361 Email: hamtinvillas@swireproperties.com

 **SWIRE PROPERTIES**









HAM TIN VILLAS

PUI O • SOUTH LANTAU



I Banyan Tree



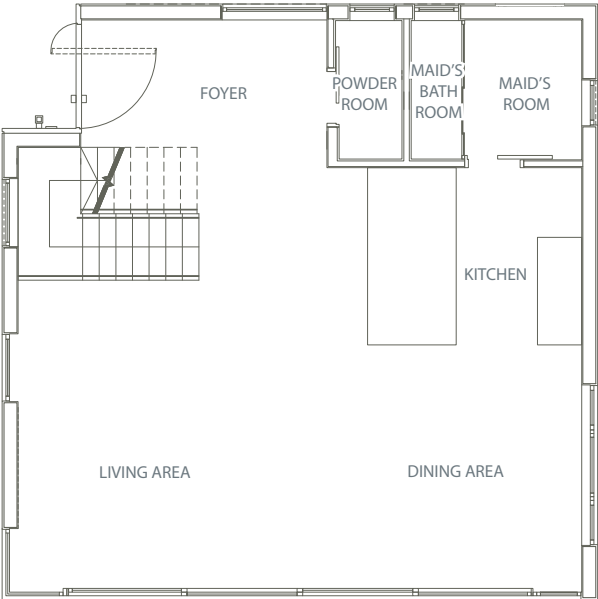
II Creek

HOUSE 1, 2, 4, 6-9

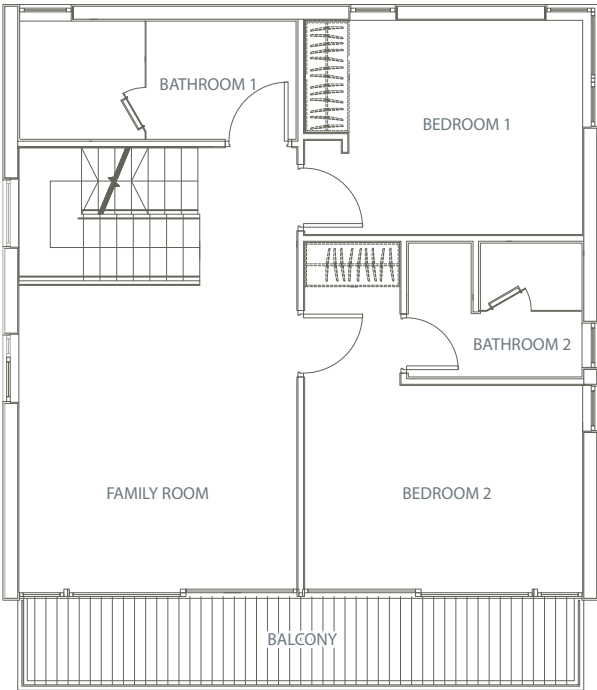
3 Bedrooms with 2 En-suites & 1 Family Room (1,706 sq.ft.)



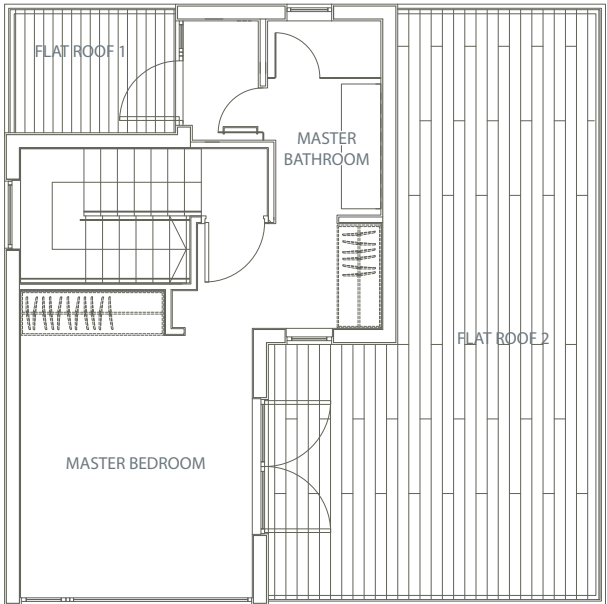
>  **GROUND FLOOR**



>  **1ST FLOOR**



>  **2ND FLOOR**

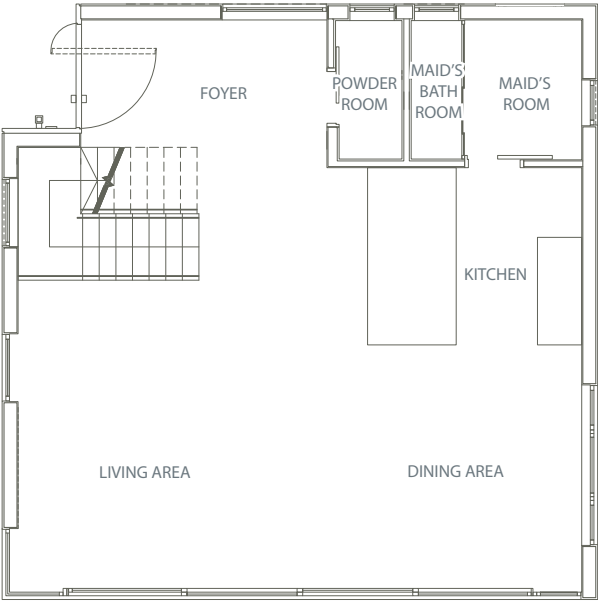


HOUSE 3 and 5

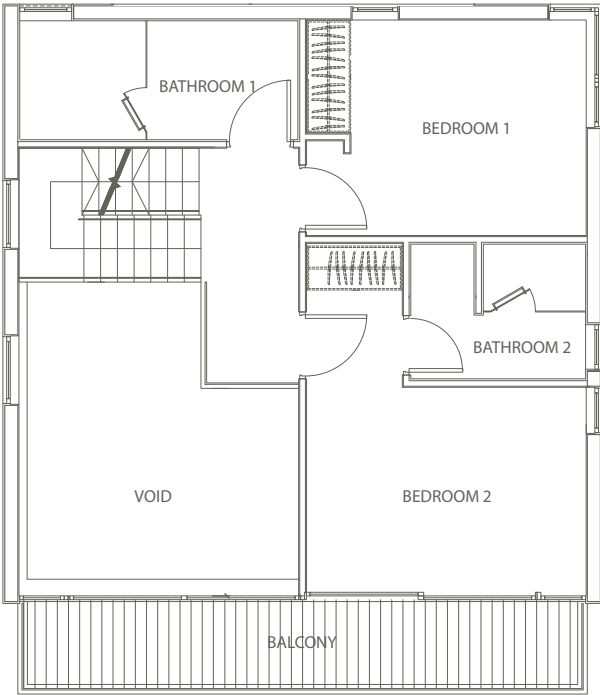
3 Bedrooms with 2 En-suites (1,554 sq.ft.)



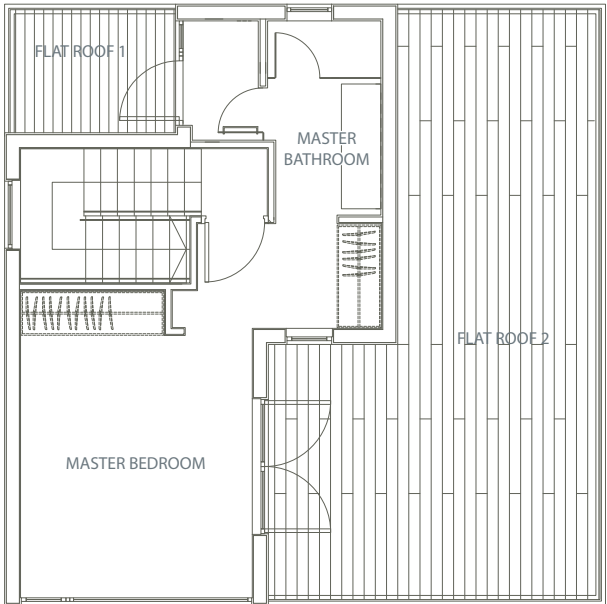
>  **GROUND FLOOR**



>  **1ST FLOOR**



>  **2ND FLOOR**







HAM TIN VILLAS

PUI O • SOUTH LANTAU

Estimated travelling time from HAM TIN VILLAS

22 minutes to Tung Chung MTR Station

24 minutes to Hong Kong International Airport

28 minutes to Hong Kong-Zhuhai-Macau Bridge



The map above has been simplified and is not drawn to scale. All information is for reference only. Source from Google Maps.



HAM TIN VILLAS
PUI O • SOUTH LANTAU



A collection of
Nine Detached Houses

House Size and Layout:
3 Bedrooms with 2 En-suites & 1 Family Room (1,706 sq.ft.)
3 Bedrooms with 2 En-suites (1,554 sq.ft.)

- Features:
- Fully-fitted open kitchen with branded appliances
 - Exceptionally spacious garden and flat roof

Enquiries
Telephone: **(852) 2844 8980**
WhatsApp: **(852) 2844 8361**
Email: **hamtinvillas@swireproperties.com**

The information, including but not limited to the renderings, images, drawings or floor plans shown in this leaflet are for identification only. All information contained herein is subject to change without prior notice. The Owner reserves the right for the final decision. In the event of any dispute arising from the information, the cases will be finalized and concluded under the sole discretion of The Owner.

Date of Production: 8 October 2021